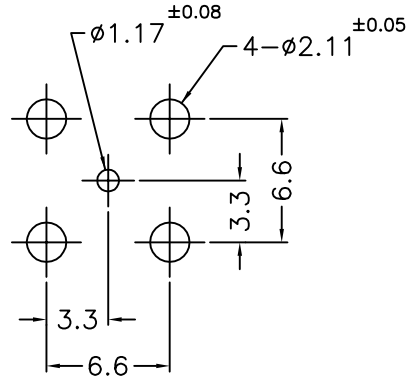
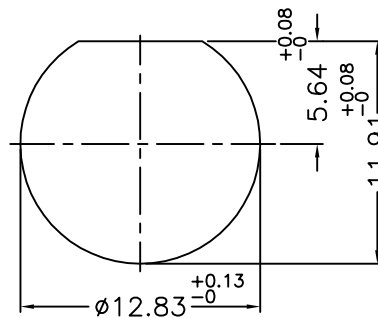
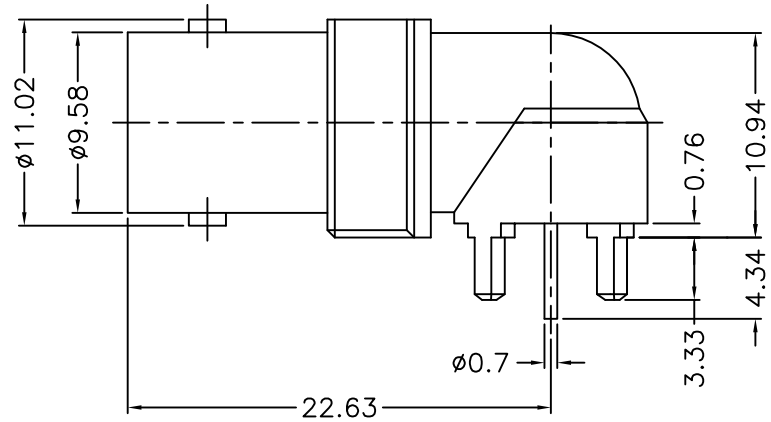
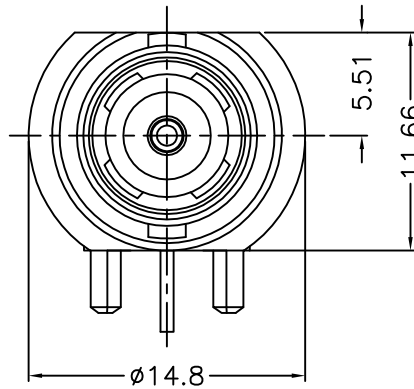


1 2 3 4 5 6 7 8

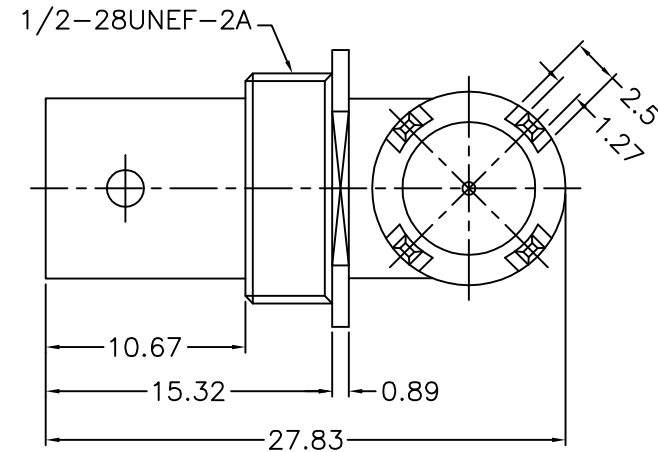
REVISIONS		
ISS	ZONE	DESCRIPTION\PER REQUEST\DATE



PCB MOUNTING HOLE  
(印刷电路板架設孔)



RECOMMENDED  
MOUNTING HOLE  
(建議架設孔)



NOTES: FINISH (PLATING THICKNESS IN MICRO-INCHES)

1. ZINC
2. NICKEL PL. 100 MIN. THICK OVER COPPER PL. 50 MIN. THICK
3. PHOSPHOR BRONZE
4. TEFLON
5. GOLD PL. 3 MIN. THICK OVER NICKEL PL. 50 MIN. THICK OVER COPPER PL. 50 MIN. THICK
6. DERLIN

DIMENSIONS ARE IN MILLIMETERS						PART NO.		G.L.I.			
UNLESS OTHERWISE SPECIFIED TOLERANCES						APPROVED	DATE			TITLE	
5	INSULATOR	NOTE 4	NATURAL	1	900D-6452R2-5T	0.5-6 = ±0.2 6-30 = ±0.4 30-120 = ±0.6 120-315 = ±1 315-1000 = ±1.6 1000-2000 = ±2.4	11-04-'15	BNC R/A P.C.B JACK			
4	CONTACT PIN	NOTE 3	NOTE 5	1	900D-6452R2-4			CHECKED	DATE	DRAWING NO.	
3	INSULATOR	NOTE 6	NATURAL	1	900D-6452R2-3D			11-04-'15	900D-6452R2-50D		
2	INSULATOR	NOTE 6	NATURAL	1	900D-6452R2-2-50D				DRAWN	DATE	FILE NO. R:\D\G\DWG\900\D\6452R2\50D
1	BODY	NOTE 1	NOTE 2	1	900D-6452R1-1			ANGELA		11-04-'15	
NO.	DESCRIPTION	MATERIAL	FINISH	Q'TY	DRAWING NO.	SCALE	2.5/1	ISSUE	A		

1 2 3 4 5 6 7 8

F

E

D

C

B

A

F

E

D

C

B

A